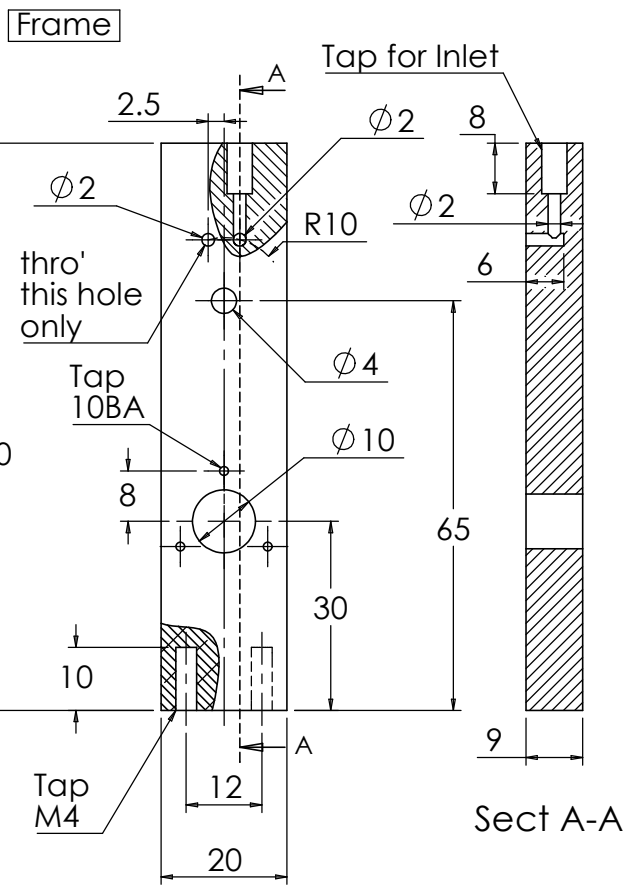
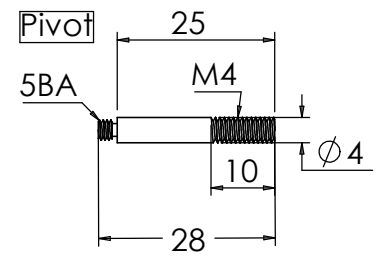
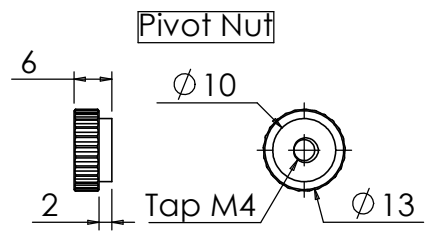
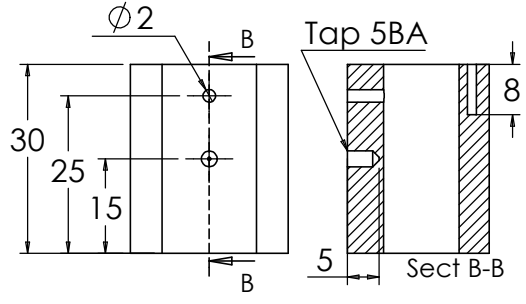
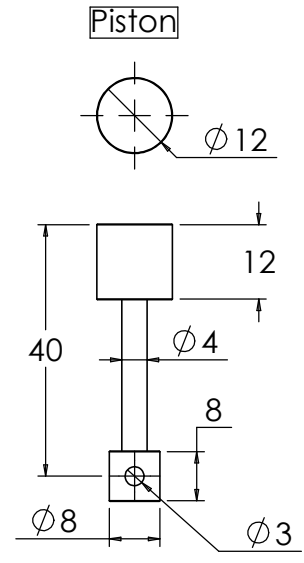
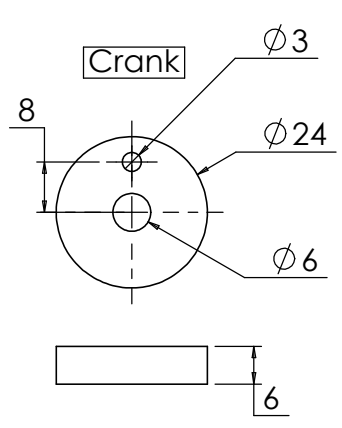
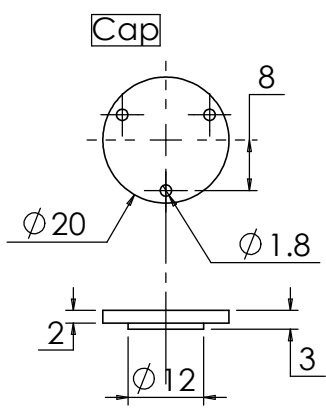
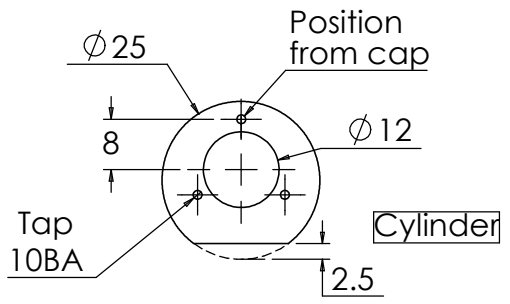
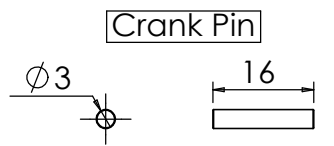
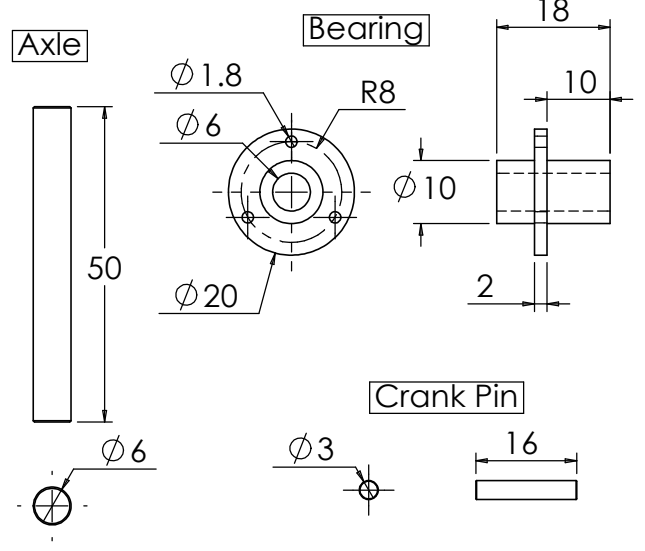
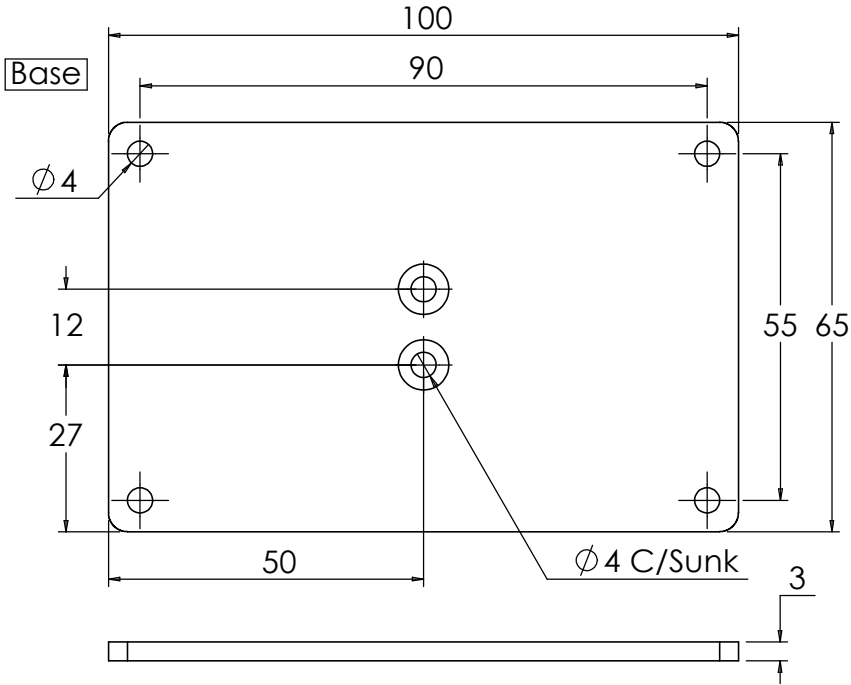


MK1 Simple Oscillating Steam Engine

Assembly Drawing | (c) Steves-workshop.co.uk

Component	Material	QTY	
1	Base	Steel	1
2	Axle	Silver Steel	1
3	Bearing	Brass/Bronze	1
4	Crank	Steel	1
5	Crank Pin	Silver Steel	1
6	Frame	Brass	1
7	Cylinder	Brass	1
8	Cap	Brass	1
9	Piston	Brass	1
10	Pivot	Steel	1
11	Pivot Nut	Brass	1
12	Flywheel	Steel/Iron	1
13	Spring	Steel	1
14	C/Sunk Screws	Steel	2
15	10BA Screws	Steel	6
16	Grub Screw	Steel	1



Mk1 Simple Steam Engine  
Part Drawings (c) steves-workshop.co.uk

